



# Newsletter

## Summer 2009

Wolfe's Neck Farm is an historic 626 acre farm on the Maine coast dedicated to sustainable agriculture, environmental education, and community well-being through the enjoyment of our natural landscape.

[www.wolfesneckfarm.org](http://www.wolfesneckfarm.org)

### Plein Air Event June 1st – 12th



DORY, KEVIN DALEY, 2008

This June we will have our second Plein Air Event at the Farm with 17 participating artists. The public is invited to watch the artists at work between June 1 and June 12. The works of art will then be auctioned as part of the Art Fest. Between June 12 and June 19, you are invited to view and take part in a silent auction of the completed works.

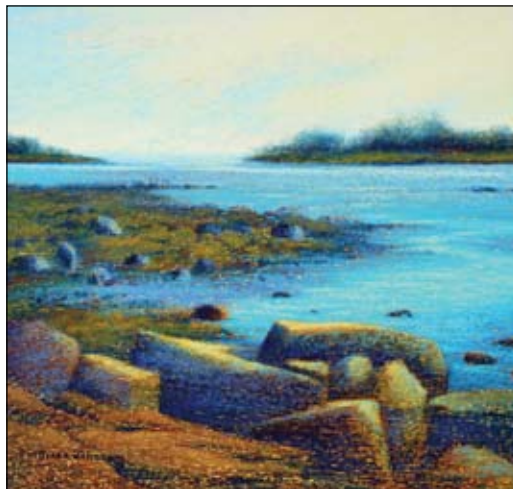
Twenty five artists applied to this juried event. We were fortunate to have Joseph Cousins of Freeport as our juror. The process of selecting the participating artists was a difficult one – thank you to all artists who applied. Joseph had the following comments about the selection process: "As juror I was looking for artists with strong design and color sense, as well as those who were familiar with working on location in the atmosphere. It was important that a hands-on approach, void of any kind of mechanical means, would be employed in the final piece of art to be presented for the auction."

The artists will be creating a work of art in a mix of art forms from painting to pottery to fiber art on location at the Farm. During this time there will be a sign posted outside the Farm House with the artists' locations and schedule, so everyone can watch them at work. The finished art will be on display from June 12 through the 19th, for the public to preview the pieces. A silent auction will take place at the Art Fest to be held at the farm on Saturday, June 20. Fifty percent (or more) of the proceeds will be donated to Wolfe's Neck Farm.

*Come and support local artists and Wolfe's Neck Farm!!*

Participating artists:

Corrine Bongiovann	Caren Marie Michel
Rachel Bradley	Ellen Pelletier
Kevin Daley	Alexandra Perry-Weiss
Linda Green	Elizabeth Rosquete
Katherine Harman Harding	Carol Santora
Alice Wheatland Ingraham	Judy Segal
Diana Johnson	Carolyn Walton
Ann Macleod	Richard Winslow
Susan Mesick	



ROCKS, DIANA JOHNSON, 2008

184 Burnett Road • Freeport, Maine 04032 (207) 865-4469 / Fax: (207) 865-4884 e-mail: [general@wolfesneckfarm.org](mailto:general@wolfesneckfarm.org)

### Art Fest 2009



THE GATHERING, CAROL SANTORA, 2008

Saturday June 20, 2009  
9 am to 4 pm

The Art Fest is returning to Wolfe's Neck Farm this year. **The works of over 50 New England artists** will be featured - painters, fiber artists, jewelers, potters, photographers, glass makers, and many more. There will be live music and artist demonstrations, and the Friends of the Farm will be serving food and providing children's activities.

**Free admission.** A fun day for all ages!!

**Plein Air Silent Auction & Raffle of Fine Art & Crafts**

*Thanks to our sponsors ...*



**SAVE THE DATE!**

**Art Fest 2009 at the Farm, June 20 from 9:00 to 4:00**

**New Member Campaign – Join the Friends of the Farm** [www.wolfesneckfarm.org](http://www.wolfesneckfarm.org)

Non-Profit  
U.S. Postage  
**PAID**  
Freeport, ME 04032  
Permit #42

**Wolfe's Neck Farm**

184 Burnett Road  
Freeport, ME 04032

## Education News

Being on the Farm these last few months as winter begrudgingly receded made me understand spring in a new way. I can give you countless anecdotes. I've found myself with my arm submerged inside a sheep trying to deliver a poorly positioned lamb with 12 children shooting questions out of all sides of their mouths. I've watched the April Camp kids handle as many worms as possible in the compost pile (and then launch a worm-saving mission for the lost ones along the road). We've explored and dissected eggs right from the coop and then contemplated the miraculous three week difference between those and the chicks that were hatching at that moment. We've constructed a hoop house and garden beds in 5 hours with the dedicated efforts of a local high school group, and then witnessed as some planted the first seeds of their lives.

This spring has been an important reminder to me that every year we are given a new chance. Even (and perhaps especially) when threats of a pandemic and an unsteady economy and climate change make the world feel overwhelming and unstable, each time winter pulls back the snow from the land around us, we have the astonishing ability to grow our own food, and through that, to generate our own roots and stability.



Heather Foran

important conversation. Thanks to Richard Kompe, Former Gov. Angus King, Dr. Harry "Dutch" Dresser, and Naoto Inoue for speaking, and to all of the sponsors and volunteers who made the series happen!

**April Vacation Camp** kicked off our spring season. We had an incredible week that started with highlights like hatching chicks and lamb deliveries, punctuated by starting seeds, learning about compost, and painting pots with Judy Segal, and finishing with a silent solo nature walk, numerous games of Animal Tag, and one marathon rendition of "Rare Bog, Rattlin Bog".

Our **Lamb Watch** just concluded and our five lambs (four ewes and a ram) are healthy and mischievous! They are being tended by their mothers, some of whom are first time moms and doing an incredible job. Come by to see them soon as they grow so quickly! Thank you to all the staff and volunteers who spent late nights and early mornings checking in on the ewes.

### Looking Forward...

**Spring Farm School and Field Trips** are beginning again, and Judy, Elizabeth and I are planning new and exciting offerings for visitors to WNF. For example, we will be hosting a Teacher Open House the first week in June in order to acquaint area educators with the offerings at the Farm.



Students from Casco Bay High School in Portland working during their Farm School experience

**Wolfe's Neck Farm Summer Camp** will be held weekly beginning June 23 and ending August 15th. Programs are offered for ages 4 through 16. The youngest group - Peapods meet from 8:30-12:30; and all other ages from 8:30-3:00. Before and After Camp Care is available beginning at 7:30 and ending at 5:30. *We regret we cannot offer After Care for Peapods.*

Registrations keep pouring in, but space is still available. If you are planning to enroll a camper, or if you know someone who would like to know more about the program, we encourage you to call or email the Farm for information and registration materials. Information is also available online at [www.wolfesneckfarm.org](http://www.wolfesneckfarm.org). **Don't Forget, if you are a member of the Friends of the Farm, you receive a camp discount, so join the Friends and enjoy the many benefits we offer all year round.** *Financial aid is available.*

This year we are excited to offer the **Green Energy Project**, a new program for high school students. These students will spend two weeks at the Farm learning about the need for renewable energy and becoming advocates of solar power, as they construct a solar panel at the farm. The students will learn leadership and problem-solving skills and apply those to real and pressing environmental issues! If you know of a high school student who might be interested, please have



Thanks to LLBean for their generous donation of six tandem kayaks for Summer Camp.

On April 26th Mitch Mitchell, the Farm's Educational Coordinator, left for pre-deployment training in the Army National Guard. With all the hats Mitch wears, he will certainly be missed. Heather Foran our Americorps volunteer has been appointed the Interim Coordinator.



them call the Education Office 865-4363 or check out the website [www.maineenergyproject.com](http://www.maineenergyproject.com).

We will also be resuming the **Do It Yourself Series** for the summer. Join us for a **Canoe/Kayak Trip Planning** class! Eric and Stephanie Buckley have a combined 50 years of experience with back country camping and wilderness guiding on foot, horseback, and in canoes and kayaks. Their class will be geared for beginners to modestly experienced boaters who are interested in learning the essential skills of trip planning and preparation. The fee for this course

is \$30/individual, \$60/family. Please call the Education Office at 865-4363 or check online at website [www.wolfesneckfarm.org](http://www.wolfesneckfarm.org) for more information.

On June 18 from 6:00pm - 8:00pm, we will host a reprise of the popular **Introduction to Beekeeping Class**. Learn the essential skills needed to keep your own bees. Discover their impact on flowers and fruit bearing trees in your area! Beekeeping can be a rewarding and even lucrative hobby! The fee for this class is \$25/individual, \$50/family.

Keep checking the Wolfe's Neck Farm calendar for more **Do It Yourself** offerings, including seasonal foods cooking classes and food preservation classes through the harvest season!

### Volunteering...

Thank you to everyone who has spent hours at the Farm pitching in this winter and spring. I've been astonished in my short time here to see how many people contribute on a daily basis. As I mentioned earlier, we will need a great deal of help through the summer and fall with animal chores, gardens, trail maintenance, and educational programming. With so much going on and work to be done these days, we have an exciting opportunity to bring people together on a truly community-based farm.

### Farm Wish List

Spring Cleaning? WNF always needs tools and supplies. Give us a call at 865-4469.

- Wheelbarrows
- Shovels
- Garden forks
- Pitch forks
- Rakes
- Garden tools
- Rototiller
- Bags of vermiculite & perlite
- Building materials
- Lumber over 4ft
- Screws/bolts
- Carpentry tools
- Craft supplies
- Vacuum cleaner
- Dorm-size refrigerator

Thanks for helping out!



Lamb twins born in early April

### Changes in the Education Office...

As many of you may know, Mitch was sent to a five month pre-deployment class for the Army. He is currently in Missouri, and will be returning for a few months in mid-October. I am taking over his position, and will be supported by Elizabeth Patten, who will be working part-time, and Judy Higbea who has already volunteered innumerable hours and will continue to do so. In the coming weeks and months, the Farm will need more volunteer support than ever. Please consider contacting us to help out! Call 863-4363 or [hforan@wolfesneckfarm.org](mailto:hforan@wolfesneckfarm.org) or through the website [www.wolfesneckfarm.org](http://www.wolfesneckfarm.org)

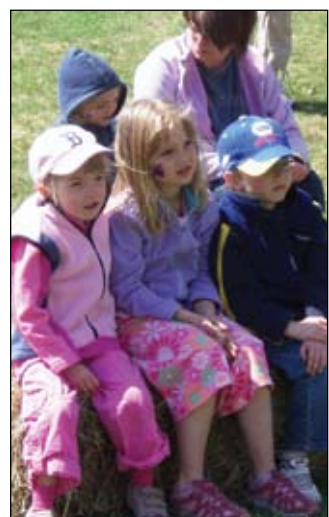
### Looking back...

The Farm was far from hibernating this winter, as our little farmhouse hosted more than 100 participants in the **Do It Yourself Series**. We held our first ever **Winter Field Trips** (try animal tracking with 15 snowsuit laden three year olds!) and ran some pilot programs with in-class programming on food systems and trash at L'Ecole Francaise du Maine and Casco Bay High School.

Our **Farmer for the Morning** program concluded in mid-April with record attendance in the last few weeks. Our many "regulars" became adept at both feeding and teaching other children how to safely feed the animals. Look for Saturday morning Parent/Child programs starting in June!

WNF's winter lecture series, "**Renewable Energy for Maine: A Future of Sustainability**", was very well-attended. Our four speakers represented a variety of backgrounds, and provoked much thoughtful and

## SPRING CELEBRATION



Enjoying the music



Learning to spin



Future Farmer



Board member Sarah Tracy and her daughters



Roger Tincknell

## RECOMPENCE IS BETTER THAN EVER!

2009 is off to a flying start at Recompence. Reservations are coming in faster than ever. Our many camping friends are planning their annual visits to Recompence and reserving their favorite site and time. It's always a pleasure to hear from our camping family and welcome new guests. Our friendly staff is ready to offer the best hospitality and service possible.



Jim DeGrandpre



As always, our focus is to continually improve our camping experience, while preserving the peace, quiet, and natural beauty that is Recompence. Our goal is to make the campground better, not bigger. This year you will see many improvements. Our existing electric sites have been rewired with new 30 amp service and 12 new electric and water sites, also with 30 amp service, have been added. These new sites will accommodate camping units up to 32 feet. They are spacious sites in a section of the Campground very close to the shore. Nearby will be our Casco Bay Overlook with chairs, picnic tables and a fire pit for campers to relax and enjoy beautiful views of the bay. Our cottages are also getting a face lift with a fresh coat of paint, new cook stoves, furniture, grills, cookware and dinnerware will make them more pleasant than ever.

New this year is the Recompence Snack Shack serving camper favorites like pizza, hot dogs, lobster rolls, and scooped ice cream. Once you try our good food, you'll be back for more! Also new this year is our pavilion group area where there will be a large tent, picnic tables, grill, handicapped accessible bathroom, water, and electricity. This is the perfect place for group events such as family reunions, company parties, and rehearsal dinners. Space is limited to 75 people.

Our great Wolfe's Neck Farm garden volunteers are already preparing our many flower gardens to look their best for the 2009 season. We appreciate their continuing dedication. Special thanks to all our many volunteers who help clean up and prepare Recompence for the camping season.

Please remember to visit our website at [www.freeportcamping.com](http://www.freeportcamping.com). It is the best way to learn more about Recompence and to make reservations. Check out our specials for early and late season camping and for extended stays.

Happy camping! ~ Jim

## 50 Years and Still Growing ...



Tim Kittredge

This year is the Farm's 50th anniversary and we will be celebrating this achievement. I sometimes wonder what Mr. and Mrs. Smith would think if they could visit the farm now and see all that is occurring here. Would they approve? What suggestions would they make? They cannot guide us as we make plans for the future; we depend on the Farm's many friends to help plan for Wolfe's Neck Farm's future. I want to provide you with a brief update on significant past events and also give you an overview of future Farm activities.

Wolfe's Neck Farm, like most organizations at this time, faces financial challenges as we move forward—increasing expenses without corresponding increases in revenues. WNF lost \$33,000 operationally in 2008, about \$10,000 more than expected. There is a small gain projected for 2009. Unfortunately for the Farm, most of the revenue sources are weather dependent. The Harvest Dance, Spring and Fall Celebrations, and Recompence Campground revenues are all affected by inclement weather.

On the positive side, this past year was one of growth for WNF even though the overall economy was weakening. Over 150 new "friends" became members the Farm and donations increased. Funds raised through the 2008 Annual Appeal and memberships increased 19% from those received in 2007. Sponsorships for special events increased and there was a successful drive for new business members. The support Wolfe's Neck Farm receives from our many friends and supporters is essential to maintaining the facilities and the mission of sustainable agriculture, education and recreation.

In February 2008, WNF lost the use of the Burnett Road Bridge because of structural problems. The loss of the bridge divided Wolfe's Neck Farm in half and had a substantial negative impact on our operations, especially those relating to agriculture. Through the work of a number of concerned Freeport residents a referendum was approved in November to replace the bridge and the work was contracted to CPM Constructors. I am happy to report they began work in early April and within the next few weeks the new bridge will be open. The bridge is a single lane, wood decked structure. I would like to thank all those individuals who helped make this possible.

WNF's Agriculture Committee has been very active examining the Farm's existing operations and ways to

develop new activities. One of the major goals of the Farm's strategic plan is to carry on the Smith family's commitment to foster "innovations in alternative/organic farming". These plans will link the Farm's education programs directly to agriculture activities. The WNF Board of Directors has authorized the Committee to search for another farming partner in addition to Pineland Farms Natural Meats to raise livestock or grow produce.

WNF and its partners will continue to practice organic farming defined as "an ecological production management system that promotes and enhances biodiversity, biological cycles, and soil biological activity. It is based on minimal use of off-farm inputs and on management practices that restore, maintain, or enhance ecological harmony. The primary goal of organic agriculture is to optimize the health and productivity of interdependent communities of soil life, plants, animals and people." WNF will "ensure that practices are employed on it premises which avoid or largely exclude the use of synthetically compounded fertilizers, pesticides, growth regulators, and livestock feed additives. To the maximum extent feasible organic farming systems rely on crop rotation, crop residues, animal manures, legumes, green manures, off-farm organic wastes, mechanical cultivation, mineral bearing rocks, and aspects of biological pest control to maintain soil productivity and tilth, to supply plant nutrients to control insects, weeds and other pests."

Another area that is being looked at in the Strategic Planning process is Recompence Shore Campground. Being one of Maine's most beautiful ocean-front camping venues we see more and more campers coming here to stay. In 2008, there were 6,999 camper nights at Recompence Shore Campground, a 10% increase over the previous year, and reservations are up 20% from 2008 at this time. Many new campers say they have heard about the campground from friends who have camped here. Jim DeGrandpre and his friendly, competent staff are making improvements that enhance campers' experiences. See Jim's article for details.

I continue to be awed by the number of families visiting Wolfe's Neck Farm throughout the year. Even on the coldest days of the winter, there is always someone checking out the animals in the barn or enjoying a brisk walk in West Bay or on the Farm's trails. Fortunately, the Smith family had the foresight to preserve WNF for future generations and their vision is alive and well today.

As always, I am interested in hearing your ideas, questions and concerns. I can be reached at 865-4469 or at [tkittredge@wolfesneckfarm.org](mailto:tkittredge@wolfesneckfarm.org).



## 2009 Spring Gala & Auction a Great Success - \$60,000 raised

May 2nd was a beautiful spring evening at the Harraseeket and over 200 guests enjoyed visiting with friends, and bidding on Silent and Live Auction items at the Wolfe's Neck Farm Annual Spring Gala and Auction. A delicious dinner featuring WNF Natural Beef was prepared by the Harraseeket chefs. John Bottero of Thomaston Place Auction Galleries led the generous crowd in a lively auction featuring items from a motorcycle trip in Italy to a birthday party at the Freeport Fire House. Carrie Fuller, a former summer camp counselor, introduced the popular "Fund a Counselor" bidding, and \$5,000 was raised to support this year's Summer Camp. While the final figures are not in, over 200 (up from 180 in 2008) people turned out to support the Farm's largest annual fundraising event raising over \$60,000. The Board of Directors and all WNF friends are very grateful to Jane Woodruff and Betsy Roper for leading the committee and volunteers. Thanks to everyone on the committee, the volunteers, the patrons, the sponsors and all who attended and took part in the auctions for making this year's Gala a great success.



Jim and Pam Matson during dinner



Dale and Carol Bouton enjoying the evening with Sharon Bushey

Thanks to the generosity of Bath Savings Institution and Winter People, Spring Gala guests received a handy re-usable grocery bag.



### Committee

Jane Woodruff, Co-chair  
Betsy Roper, Co-chair  
Carol Bouton  
Don Bushey  
Thomas Edling  
Chris Herter  
Joy Johnson  
Kim Mason  
Jim Matson  
Cynthia Orcutt  
Anne Parker  
Sam Parkhill  
Sandy Peters  
Jule Whelan  
Doug Woodbury

### Patrons

Joy & Chip Ahrens  
Carol & Dale Bouton  
Jane & Ed Bradley  
Sharon & Don Bushey  
Jim DeGrandpre  
Elizabeth & Rod Duckworth  
Isabelle & Thomas Edling  
Lin Peyton & Morris Hancock  
Marge & Bob Healing  
Bridget & Mike Healy  
Chris Herter  
Holly & Peter Horne  
Joy & Greg Johnson  
Patty & Tim Kittredge  
Mollie & Kim Mason  
Pam & Jim Matson  
Rosemary & Ken Murphy  
Judy & Sam Parkhill  
Dean & John Paterson  
Sandy & John Peters  
Pat & Marty Robles  
Betsy & Gar Roper  
Meredith Smith  
Kathy & Sam Smith  
Minie Smith  
Sallie Smith & Jim Kise  
Linda & Charles Swanson

Sarah & Alan Tracy  
Nita & Al Voskian  
Christopher Wade  
Sandy & Bill Wallen  
Carol & Joe Wishcamper  
Judy & Doug Woodbury  
Jane & Rick Woodruff

### Sponsors

Platinum Sponsor  
Bath Savings Institution  
Since 1852  
BATH SAVINGS TRUST  
COMPANY  
Silver Sponsors  
Linekin Bay Energy Company  
Murray Plumb & Murray,  
Attorneys at Law

### Bronze Sponsor

Downeast Energy & Building  
Supply

### Supporting Sponsors

Brian Clement  
Bernstein, Shur, Sawyer, &  
Nelson, P.A.  
Border Trust  
Dead River Company  
Delorme  
Goodwin's Volvo  
Key Bank  
Mark M. Dorsey, Inc.  
Riley Insurance Agency, LLC  
Verrill Dana, LLP  
Winter People  
Joseph & Jennifer Yilmaz

*We extend our sincere thanks to all our sponsors for their contributions to the 2009 Spring Gala!*

# Time to Grow the Farm

Wolfe's Neck Farm is kicking off the 2009 New Member Campaign and we hope you will join us. This year the Farm is celebrating its 50th anniversary, fifty years of providing access to over 600 acres of preserved land to thousands of visitors a year – all without charge. To maintain that tradition, WNF relies on memberships and donations to support its annual operating budget.



Anne Homme

The founders of Wolfe's Neck Farm, Mr. and Mrs. Smith came to Freeport from Philadelphia to purchase the Stone House on Wolf Neck Road. Once they arrived, they realized that it wouldn't be long before the coast line would be under pressure to be developed. With that in mind, the Smiths began purchasing land and historic farmsteads to create a demonstration farm that would be a model for other Maine farms.

This model was the forerunner of what we now call sustainable agriculture; a concept that embraces a holistic approach to the land - an approach that includes techniques using effective land management, woodland and pasture stewardship, environmental education, recreation and historic preservation. Not only did they run their farm with sustainable practices, but they were committed to providing the public with access to the beautiful coast line of Casco Bay.

Their commitment and determination are still alive today in the mission of the Wolfe's Neck Farm Foundation. To ensure the success of the mission, the Farm asks its friends, neighbors and visitors to become members and donors.

When you become a member of the Friends of the Farm, you will be joining a dedicated team of supporters who believe in the Farm's vision to promote community well-being through sustainable agriculture, environmental education, and enjoyment of our beautiful natural land and seascapes. Being a small, local non-profit, your support is essential to our future.

If you are a frequent visitor, a program participant, a proponent of the WNF mission, please become a member today and show your appreciation for what the Farm means to you. Your membership fee will help the Farm take care of a wide variety of animals, maintain and improve the buildings and grounds, and assure that your experience is interesting, fulfilling and fun.

Please help us reach our goal of 100 new members by sending in the Membership Form, going online at [www.wolfesneckfarm.org](http://www.wolfesneckfarm.org) or picking up a membership envelope when you are at the Farm. Help us keep the Farm a growing place!



**In Memoriam** The Wolfe's Neck Farm community family sends their condolences to the DeGrandpre family. Claire, wife of Charlie and mother of Richard, David, Jim, and Chuck, died April 16, 2009. She is remembered for her love of life, family and Wolfe's Neck Farm. She and Charlie managed the Farm for over 20 years; raising their family while living in the Farmhouse. She will be missed by all who had the joy of knowing her.

**Coastal Studies for Girls** has moved into the newly renovated Ward farmhouse on the Wolfe Neck Farm property. The new "schoolhouse" will be the heart of the growing campus. Thanks to the help of over forty volunteers who helped paint, landscape, build shelves and move furniture, we are now in our new home, and we're preparing to welcome our first class of girls in the Spring Semester of 2010.

Please join us to celebrate this milestone at an **Open House: Sunday, June 7 from 1-4 pm at 308 Wolfe's Neck Road.** For more information contact us at 865-9700 or [www.coastalstudiesforgirls.org](http://www.coastalstudiesforgirls.org).



COASTAL STUDIES FOR GIRLS  
A SCIENCE & LEADERSHIP SCHOOL



## Friends of the Farm

The Friends have had a very busy spring with the planning of the Plant Sale on May 16th, 8-12 pm at the Farm. Linda Swanson and Joy Johnson were the chairpersons of this event. It was a very pretty day and there were many gardening books plus vases of all kinds including some hand painted ones. The plants were wonderful and very plentiful. The committee worked hard to have a good variety of plants some dug last fall and potted up for over the winter. The sale netted about \$1,400. Amazing!!



Mollie Mason

The Art Fest is also a major event for the spring. Libby Rosquete offered to run it and has done a wonderful job of organizing the artists, along with musicians, and an offering of demonstrations from the artists themselves.

This year the Art Fest will be held on June 20th from 9-4 pm and will be at the farm. Tents will be available for the artists and demonstrations. A Plein Air opportunity will be taking place beginning on the first of June and there will be about 17 artists taking part. Then there will be a silent auction for the various works of art. Also at the Art Fest we will be serving hamburgers grilled by Charlie Swanson and Kim Mason. Drinks and sweets will be available.

This is a different Art Fest from previous years and we are grateful to Libby for organizing it in such a festive way. Myra Hopkins from The Freeport Merchants Association has also been very helpful with the planning and publicity. We are hoping to have a shuttle bus on hand to take people back and forth from town.

Last, but not least, I am happy to announce that Amy Yankee will be the new chairperson of the Friends of the Farm. Amy organized the Fall and Spring Festivals held at the Farm and both were tremendous successes. We are very glad that Amy will be leading us into a new year of events and activities.

As I bid adieu to the job as chair I want to thank everyone who so generously helped me during the past three years. The committee is a talented and supportive group and I am glad to be a part of the Friends. I will still be active in the various events and activities in which the Friends are involved. It is a wonderful group of people all dedicated to making the farm a welcoming and educational place.

### Wolfe's Neck Farm Foundation Trustees

Patricia Robles <i>PRESIDENT</i>	Kimball Mason <i>VICE PRESIDENT</i>	Lynn Heinz <i>TREASURER</i>	Donald Bushey <i>SECRETARY</i>
Chip Ahrens	Judy Higbea	Ramsey Ludlow	Sarah Smith
Rick Clugston	Peter Horne	John Orcutt	Sam Smith
Michael Healy	Tucker Lannon	Judy Parkhill	Sarah Tracy
Chris Herter	Howard Lowell	Dean Paterson	Jane Woodruff

### Wolfe's Neck Farm Staff

Timothy Kittredge <i>EXECUTIVE DIRECTOR</i> tkittredge@wolfesneckfarm.org	Anne Homme <i>DEVELOPMENT/MARKETING MANAGER</i> ahomme@wolfesneckfarm.org
Myra DiLeo <i>ADMINISTRATIVE ASSISTANT</i> mdileo@wolfesneckfarm.org	Jim DeGrandpre <i>RECOMPENCE MANAGER</i>
Heather Foran <i>EDUCATION COORDINATOR</i> hforan@wolfesneckfarm.org	184 Burnett Road Freeport, Maine 04032 207-865-4469 Fax 207-865-4884

[www.wolfesneckfarm.org](http://www.wolfesneckfarm.org)

Newsletter Editor: Anne Homme

## Welcome ...

We welcomed these new Friends of the Farm from January 1st to April 30th. We appreciate your support and hope that you will enjoy all that the Farm has to offer.

Victoria Boundy & Jay Collier  
Hugh & Danielle Bowen  
Robert & Margaret Cushman  
Jeannie Dabbs  
Dan & Sarah Davies  
Isabelle & Thomas Edling  
Warren & Laura Empey  
Vanessa Farr & Craig Gorris  
Amy Ferrer Rogers & Edward Tittmann  
Julia Fusari  
Pete & Kim Gambardella

Alex Grabcheski & Tally Blumberg  
Christine & Savas Gunduz  
David & Rebecca Hotelling  
Dale Koenig  
Tim Lewis & Deb Smith  
Paul & Susan Linet  
Tom & Nancy Magadieu  
Karyn Marden  
Martha Mixon & Mike Roland  
Michael & Gwen Moore  
David Morton & Dianne Chilmoneczyk

Nancy & Bradley Osborn  
James & Julie Oshetski  
Jennifer & Anthony Panciocco  
Heather & Steve Perkinson  
Julia & Dick Pew  
Jill & Tobin Piker  
Nancy Randall Clark  
Brian & Paula Saabye  
Charles & Katherine Staples  
Ben Steele  
David Suchoff & Karen O'Rourke

## Join the Friends of the Farm!

It's a terrific year for Wolfe's Neck. Our membership keeps growing with folks who appreciate all we have to offer. They realize that it takes many hands and pocketbooks to support our mission. As you see on the Calendar of Events, we are dedicated to providing meaningful programs and fun activities for all ages.



Please send in your form or go online at [www.wolfesneckfarm.org](http://www.wolfesneckfarm.org) and become a Friend of the Farm today. **Your membership is tax deductible.**

### Membership Levels

Individual	\$25	Sponsor	\$100	Patron	\$500
Family	\$35	Steward	\$250	Smith Society	\$1,000

### I/We would like to join the Friends of Wolfe's Neck Farm

Please Print Clearly

Name(s) \_\_\_\_\_

Address \_\_\_\_\_

Phone \_\_\_\_\_ Email \_\_\_\_\_

I would like to volunteer at the Farm

Enclosed in my check for \$ \_\_\_\_\_

Please charge my membership to: \_\_\_\_\_ VISA \_\_\_\_\_ MC

Card # \_\_\_\_\_ Exp. \_\_\_\_\_

Signature \_\_\_\_\_

Wolfe's Neck Farm • 184 Burnett Road • Freeport, Maine 04032

Thank you for joining us !!

## Wolfe's Neck Farm 2009 Summer & Fall Calendar of Events

• All Events are Open to the Public •

June 1st – June 20th at The Farm

**Plein Air Event** – The public is invited to watch 17 juried artists creating images around the Farm. On June 20th during the ArtFest these art works will be offered at a Silent Auction

June 18th - from 6:00-8:00 at The Farm\*

**Introduction to Beekeeping**

June 20th – from 10:00-4:00 at The Farm

**ArtFest** with local artists and crafters, music, food and children's programs

June 22nd – August 21st Summer Day Camp at the Farm\*

**Agricultural and Environmental Programs**  
– for children ages 4 to 16.

September – date to be announced\*

**Golf Outing** – watch for details

**SAVE THE DATE!**

October 3rd at the Historic Mallet Barn – Wolfe's Neck\*

**Annual Harvest Dance**

\*Registration required – call 865-4469

For more information:

[general@wolfesneckfarm.org](mailto:general@wolfesneckfarm.org) or call 865-4469

[www.wolfesneckfarm.org](http://www.wolfesneckfarm.org)

184 Burnett Road, Freeport, ME 04032

Wolfe's Neck Farm is an historic 626 acre farm on the Maine coast dedicated to sustainable agriculture, environmental education, and community well-being through the enjoyment of our natural landscape.